



**Minister's Order Pursuant to section 35(1) of "The Highways and Transportation Act, 1997"**

Pursuant to section 35(1) of "*The Highways and Transportation Act, 1997*" it is hereby ordered that, effective as stated in this Order, **at 12:01 am, Monday March 23, 2026** or have been stated **effective immediately**. Vehicles other than those exempted in Part II, section 3 (2) and 3 (5) of "*The Vehicle Weight and Dimensions Regulations, 2010*", shall be restricted as follows:

**Steering Axle**

- 10.0 kg per mm (560 pounds per inch) width of tire (manufacturer's stamped dimension) to a maximum of
- 5,500 kg on the steering axle for a truck or truck tractor equipped with a single steering axle.
- 11,000 kg on the steering axle group for a truck or truck tractor equipped with a tandem axle steering group.

**Other Axles**

- 6.25 kg per mm (350 pounds per inch) width of tire (manufacturer's stamped dimension) to a maximum of:
- 1,650 kg (3,638 pounds) per tire, or
- 2,630 kg per tire for axles equipped with single tires with a width of 445 mm or greater.

This order does not permit the weight on any axle, axle group or vehicle from exceeding the maximum weight prescribed in the "*The Vehicle Weight and Dimension Regulations, 2010*" for that axle, axle group or vehicle.

**The restriction does not apply to:**

- Emergency vehicles,
- Ministry of Highways vehicles and municipal maintenance equipment when conducting maintenance or accessing sites on or along the restricted highway,
- SaskPower, SaskEnergy and SaskTel vehicles when accessing sites along the restricted route,
- Recreational vehicles,
- Buses,
- Farm Equipment operated or towed,
- Vehicles directly crossing a Provincial Highway at an intersecting public highway or private road.

Please note that some provincial highways and bridges are subject to special reduced or restricted weights and some are for specific periods of the year, some for precise temperatures. A detailed description of these special restrictions is listed on the last four pages of this Order.

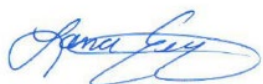
The following Rural Municipalities **will be removed** from Spring Road Restrictions **effective immediately upon posting this Order**. (RM's that have opted out will no longer appear in the Order)

No.	1	ARGYLE	No.	100	ELMSTHORPE
No.	9	SURPRISE VALLEY	No.	162	CARON
No.	19	FRONTIER	No.	221	SARNIA
No.	33	MOOSE CREEK	No.	222	CRAIK
No.	91	MARYFIELD	No.	253	WILLNER

The following Rural Municipalities **will be subject to** Spring Road Restrictions **immediately upon posting this Order**.

No.	79	ARLINGTON	No.	338	LAKESIDE
No.	225	CANAAN/LUCKY LAKE	No.	378	ROSEMOUNT
No.	226	VICTORY	No.	398	PLEASANTDALE
No.	248	TOUCHWOOD	No.	427	TISDALE
No.	277	EMERALD	No.	428	STAR CITY
No.	285	FERTILE VALLEY	No.	429	FLETT'S SPRINGS
No.	306	PRAIRIE ROSE	No.	457	CONNAUGHT
No.	314	DUNDURN			

Signed on behalf of the Minister on this 20<sup>th</sup> day of March 2026.



Lana Eering  
Government of Saskatchewan  
Ministry of Highways  
Manager, Highway Hotline/Emergency Planning Officer

Please note that some provincial highways and bridges are subject to special reduced or restricted weights and some are for specific periods of the year, some for precise temperatures. A detailed description of these special restrictions is listed on the last four pages of this Order.

**The following Provincial Highways will be subject to Spring Road Restrictions at 12:01 am, Friday March 20, 2026.**

- |        |  |         |  |
|--------|--|---------|--|
| No. 2  | From U.S. Border to St. Victor Access  | No. 99  | From Craven to Jct Hwy 6   |
| No. 13 | Cadillac to Junction 37  | No. 202 | Jct Hwy 2 to Buffalo Pound Park  |
| No. 13 | North Jct Hwy 21 to Alberta Border   | No. 220 | From Jct Hwy 20 to Jct 322   |
| No. 18 | From Jct Hwy 6 to East Jct Hwy 36  | No. 221 | Jct Hwy 21 to Cypress Hills Park Gate  |
| No. 18 | From Jct Hwy 35 to Jct Hwy 6   | No. 271 | Maple Creek (Jct Hwy 21) to Fort Walsh   |
| No. 18 | From West Jct Hwy 36 to Rockglen   | No. 301 | From Jct Hwy 1 from 200 metres north of the bridge to Buffalo Pound Park           |
| No. 18 | From Ponteix Grid to Jct. 13 at Robsart  | No. 306 | From Riceton to Jct Hwy 6 (SPECIAL RESTRICTION – 8,000kgs)                         |
| No. 18 | From Jct Hwy 2 to Ponteix Grid   | No. 306 | From Jct Hwy 35 to Riceton   |
| No. 19 | From East Jct Hwy 42 to Elbow Access   | No. 308 | From Jct Hwy 8 to Grid 600 (SPECIAL RESTRICTION – 8,000kgs)                        |
| No. 19 | From Jct Hwy 18 to North Jct Hwy 363   | No. 308 | From Grid 600 to Manitoba Border   |
| No. 22 | From Earl Grey to Jct Hwy 20   | No. 318 | From 2 km N of Jct Hwy 18 to Jct Hwy 361   |
| No. 21 | U.S. Border to West Jct Hwy 13   | No. 321 | Liebenthal (Jct Hwy 21) to 7 km East of the Alberta Border                         |
| No. 21 | East Jct Hwy 13 to Cypress Park Entrance   | No. 332 | Jct Hwy 32 to 7.1 km West of Jct Hwy 32  |
| No. 21 | Jct Hwy 1 to 12 km South of Leader   | No. 332 | 7.1 km West of Jct Hwy 32 to Hazlet (SPECIAL RESTRICTION – 8,000kgs)               |
| No. 28 | From Jct Hwy 18 to Jct Hwy 377   | No. 334 | From Jct Hwy 13 to 3.3 km south of Jct Hwy 339 (SEE SPECIAL RESTRICTION 8,000 Kgs) |
| No. 34 | From U.S. Border to Jct Hwy 13   | No. 339 | From Jct Hwy 334 to Jct Hwy 39   |
| No. 35 | From Jct Hwy 48 to Jct Hwy 1   | No. 343 | Jct Hwy 4 to Simmie  |
| No. 35 | From 3.8 km North of Jct Hwy 1 to Jct Hwy 10   | No. 350 | From U.S. Border to Jct Hwy 18   |
| No. 35 | From Jct Hwy 306 to Jct Hwy 33   | No. 358 | From Wood Mountain to Limerick   |
| No. 35 | From Jct Hwy 33 to Jct Hwy 48  | No. 361 | From Manitoba Border to Jct 9  |
| No. 36 | From U.S. Border to Jct Hwy 2  | No. 363 | From 43 km West of Moose Jaw to Neidpath   |
| No. 37 | U.S. Border to Climax  | No. 363 | Neidpath to Jct Hwy 4  |
| No. 37 | 2.35 km North of Gull Lake to Cabri  | No. 364 | From Km 19.08 to Km 36.45  |
| No. 42 | From the Jct of 367 to the Jct North Jct of 19.  | No. 367 | From Jct Hwy 42 to Jct Hwy 19  |
| No. 43 | From Jct Hwy 4 to Jct Hwy 19   | No. 371 | Jct Hwy 21 to Alberta Border (SPECIAL RESTRICTION – 8,000kgs)                      |
| No. 44 | From 3 km south-west of Davidson (Meridian Road) to Jct. Hwy 19 (SPECIAL RESTRICTION – 8,000kgs) | No. 377 | From Jct Hwy 28 to Jct Hwy 6   |
| No. 44 | South Jct Hwy 21 to 3.33 km West of Mantario (SPECIAL RESTRICTION – 8,000kgs)                    | No. 379 | McMahon to 14.66 km East of Junction No. 4   |
| No. 44 | 3.33 kms West of Mantario to Alsask  |         |  |
| No. 47 | From Handsworth Road to Jct Hwy 1  |         |  |
| No. 58 | From Jct Hwy 18 to Jct Hwy 13  |         |  |
| No. 58 | From N limits of Gravelbourg to Jct Hwy 1  |         |  |

**The following Access Roads will be subject to Spring Road Restrictions at 12:01 am, Friday March 20, 2026.**

- |       |  |        |   |
|-------|--|--------|---|
| No. 1 | Sintaluta Access                                     | No. 2  | Penzance Access                                   |
| No. 1 | McLean Park Access                                   | No. 2  | Liberty Access                                    |
| No. 1 | Grand Coulee Access (SPECIAL RESTRICTION – 8,000kgs) | No. 2  | St. Victor Access                                 |
| No. 1 | North urban limits of Pense                          | No. 2  | Mossbank Access                                   |
| No. 1 | Caron Access (SPECIAL RESTRICTION – 8,000kgs)        | No. 4  | Blumehof Access (SPECIAL RESTRICTION – 8,000kgs)  |
| No. 1 | Rush Lake Access                                     | No. 4  | Rhineland Access                                  |
| No. 1 | Waldeck Access                                       | No. 8  | Tantallon Access (SPECIAL RESTRICTION – 8,000kgs) |
| No. 1 | Webb Access from Km 0 to 1.87 Km                     | No. 11 | Disley Access                                     |
| No. 1 | Tompkins Access                                      | No. 11 | Bethune Access                                    |
| No. 1 | Piapot Access  | No. 11 | Findlater Access                                  |
| No. 2 | Sun Valley Beach Access                              | No. 11 | Findlater Service Road                            |
| No. 2 | Holdfast Access                                      | No. 11 | Aylesbury Access                                  |

- |   |   |
|---|---|
| No. 11 Craik Access                                       | No. 21 Golden Prairie Access  |
| No. 11 Girvin Access                                      | No. 21 Mendham Access (JCT 21 to 8.1 KM West)(SPECIAL RESTRICTION – 8,000kgs) |
| No. 11 Davidson South                                     | No. 22 Dysart Access  |
| No. 13 Pangman Access                                     | No. 22 Earl Grey Service Road   |
| No. 13 Khedive Access                                     | No. 33 Osage Access Road  |
| No. 13 Trossachs Access                                   | No. 33 Kronau Service Access  |
| No. 13 Bellegarde Access (SPECIAL RESTRICTION – 8,000kgs) | No. 36 Ormiston Access  |
| No. 13 Arcola Access                                      | No. 39 Mc Taggart Service Road  |
| No. 13 Forget Access (SPECIAL RESTRICTION – 8,000kgs)     | No. 39 Wilcox Service Road  |
| No. 13 Limerick Access                                    | No. 39 Roche Percee Access  |
| No. 13 Verwood Access                                     | No. 42 Marquis Access   |
| No. 15 Semans Access                                      | No. 42 Riverhurst Access  |
| No. 18 Beaubier Access                                    | No. 42 Tuxford Access   |
| No. 18 Gladmar Access                                     | No. 43 Palmer Access  |
| No. 18 Big Beaver Access                                  | No. 48 Fairlight Access   |
| No. 18 Fife Lake Access                                   | No. 48 Kendal Service Road  |
| No. 18 McCord Access                                      | No. 48 Odessa Service Road  |
| No. 19 Loreburn Access                                    | No. 48 Vibank Service Road  |
| No. 19 Elbow Access                                       | No. 322 Kanata Valley Access  |
| No. 19 Kincaid Access                                     | No. 322 Saskatchewan Beach Access   |
| No. 20 Duval Access                                       | No. 363 Coderre Access  |
| No. 20 Bulyea Access                                      | No. 363 Shamrock Access   |
|   | No. 364 Edenwold Access   |

**The following Rural Municipalities will be subject to Spring Road Restrictions at 12:01 am, Friday March 20, 2026.**

- |                           |                       |
|---------------------------|-----------------------|
| No. 6 CAMBRIA             | No. 76 AUVERGNE       |
| No. 7 SOURIS VALLEY       | No. 77 WISE CREEK     |
| No. 8 LAKE ALMA           | No. 92 WALPOLE        |
| No. 10 HAPPY VALLEY       | No. 93 WAWKEN         |
| No. 11 HART BUTTE         | No. 94 HAZELWOOD      |
| No. 12 POPLAR VALLEY      | No. 95 GOLDEN WEST    |
| No. 17 VAL MARIE          | No. 96 FILLMORE       |
| No. 18 LONE TREE          | No. 97 WELLINGTON     |
| No. 38 LAURIER            | No. 99 CALEDONIA      |
| No. 40 BENGOUGH           | No. 101 TERRELL       |
| No. 42 WILLOW BUNCH       | No. 102 LAKE JOHNSTON |
| No. 43 OLD POST           | No. 103 SUTTON        |
| No. 44 WAVERLEY           | No. 104 GRAVELBOURG   |
| No. 45 MANKOTA            | No. 105 GLEN BAIN     |
| No. 46 GLEN MCPHERSON     | No. 106 WHISKA CREEK  |
| No. 49 WHITE VALLEY       | No. 107 LAC PELLETIER |
| No. 51 RENO               | No. 108 BONE CREEK    |
| No. 64 BROCK              | No. 109 CARMICHAEL    |
| No. 65 TECUMSEH           | No. 110 PIAPOT        |
| No. 67 WEYBURN            | No. 124 KINGSLEY      |
| No. 68 BROKEN SHELL       | No. 125 CHESTER       |
| No. 69 NORTON             | No. 126 MONTMARTRE    |
| No. 70 KEY WEST           | No. 127 FRANCIS       |
| No. 72 LAKE OF THE RIVERS | No. 128 LAJORD        |
| No. 73 STONEHENGE         | No. 129 BRATT'S LAKE  |
| No. 74 WOOD RIVER         | No. 130 REDBURN       |

No. 132 HILLSBOROUGH  
No. 133 RODGERS  
No. 134 SHAMROCK  
No. 135 LAWTONIA  
No. 136 COULEE  
No. 137 SWIFT CURRENT  
No. 138 WEBB  
No. 141 BIG STICK  
No. 151 ROCANVILLE  
No. 152 SPY HILL  
No. 153 WILLOWDALE  
No. 154 ELCAPO  
No. 155 WOLSELEY  
No. 156 INDIAN HEAD  
No. 157 SOUTH QU'APPELLE  
No. 158 EDENWOLD  
No. 159 SHERWOOD  
No. 163 WHEATLANDS  
No. 164 CHAPLIN  
No. 165 MORSE  
No. 169 PITTEVILLE

No. 171 FOX VALLEY  
No. 187 NORTH QU'APPELLE  
No. 189 LUMSDEN  
No. 190 DUFFERIN  
No. 191 MARQUIS  
No. 193 EYEBROW  
No. 194 ENFIELD  
No. 216 TULLYMET  
No. 218 CUPAR  
No. 219 LONGLAKETON  
No. 220 MCKILLOP  
No. 223 HURON  
No. 224 MAPLE BUSH  
No. 229 MIRY CREEK  
No. 230 CLINTWORTH  
No. 231 HAPPYLAND  
No. 232 DEER FORKS  
No. 250 LAST MOUNTAIN VALLEY  
No. 252 ARM RIVER  
No. 261 CHESTERFIELD  
No. 279 MOUNT HOPE

**The following section is not part of the Order but is appended as INFORMATION:  
Special Weight Restrictions on Selected Provincial Highways.**

The following highways are subject to reduced weights, year-round, by regulation in accordance with the *Vehicle Weight and Dimension Regulations, 2010*

Hwy	Bridge Location Description
2	Bridge over West Poplar Creek from Southern Bridge Abutment to Northern Bridge Abutment. Bridge is located approximately 1.1 km north of the Canada/U.S.A. border.

Hwy	From	To	Description
955	South abutment of the Douglas River Bridge	Northern most limit of Highway 955	Maximum GVW 41 500 kg

The following BRIDGES are restricted by Minister's ORDER to a maximum gross vehicle weight of Secondary Weights year-round. Winter Weights are not allowed.

Hwy	Bridge Location Description
2	Bridge over Little Red River from Southern Bridge Abutment to Northern Bridge Abutment. Bridge is located approximately 4.4 km south of Jct. with Hwy 355 and Hwy 2 near Spruce Home. <b>Bridge is located on East Frontage Road.</b>
3	Bridge over Red Deer River from Eastern Bridge Abutment to Western Bridge Abutment located approximately .5km west of Erwood, Sk.
4 Metinota Access	Bridge over Jackfish Narrows from Eastern Bridge Abutment to Western Bridge Abutment. Bridge is located in access road approximately 3.1km west of the Jct. with Hwy 4. <b>(Bridge is located on access road).</b>
312 Gabriel Dumont Bridge	Truss Bridge over South Saskatchewan River from Eastern Bridge Abutment to Western Bridge Abutment.
919	Bridge over Martineau River from Southern Bridge Abutment to Northern Bridge Abutment. Bridge is located approximately 39.5km northwest of the Jct. with Hwy 21 and Hwy 950
925 Dillion River	Bridge over Dillion River from the Eastern Bridge Abutment to Western Bridge Abutment. Bridge is located approximately 0.25 east of Northern Hamlet of St. George's Hill.
935	Bridge over Morin River from the Southern Bridge Abutment to the Northern Bridge Abutment. Bridge is located approximately 7km north of the Jct. with Hwy 165 and Hwy 935.
955 Clearwater Truss Bridge	Truss Bridge over Clearwater River from Southern Bridge Abutment to Northern Bridge Abutment. Bridge is located approximately - 62 km north of Jct 155 and 955 to the Clearwater Bridge.
980 Elbow Lake Access	Bridge over Midnight Creek from Eastern Bridge Abutment to Western Bridge Abutment. Bridge is located approximately .3 km west of Elbow Lake, Sk. <b>The bridge is located on Spirit Lake/Elbow Lake access road.</b>

The following BRIDGES are restricted by Minister's ORDER to a maximum gross vehicle weight of Primary Weights year-round. Winter Weights are not allowed.

Hwy	Bridge Location Description
2	Southbound Bridge over Hwy 1 from Southern Bridge Abutment to Northern Bridge Abutment. Bridge is located north of Moose Jaw Sk. at Jct with Hwy 1 and Hwy 2
6	Bridge over Barrier River Overflow from Southern Bridge Abutment to Northern Bridge Abutment. Bridge is located approximately 25.7 km south of Melfort, Sk.

**The following highways are restricted by Minister's ORDER to a maximum gross vehicle weight of 8 000 kilograms year-round.**

<b>Highway</b>	<b>From</b>	<b>To</b>
1 Caron Access	Jct Hwy 1	Hamlet of Caron
1 Grand Coulee Access	Jct Hwy 1	Village of Grand Coulee
2 Eastside Service Road near Prince Albert	Jct Boundary Street East Service Rd north	Jct Township Road (approx. 2.4 kms)
4 Blumenhof Access	Jct Hwy 4 east	Blumenhof
6 Leroy Access	Jct Hwy 6	Town of Leroy
8 Tantallon Access	Jct. Hwy 8	Village of Tantallon
12 Hepburn Access	Jct. Hwy 12	Village of Hepburn
12 Waldheim Access	Jct. Hwy 12	100 meters west of the west boundary of NW 15-42-5 W3M in the town of Waldheim.
13 Bellegarde Access	Jct. Hwy 13	Bellegarde
13 Forget Access	Jct. Hwy 13	The Village of Forget
15	Jct. Hwy 16	Jct. Hwy 9
16 Bradwell Access	Jct. Hwy 16	Village of Bradwell
21 Mendham Access	Jct Hwy 21 Mendham Access	Intersection with the North-South portion of the Municipal Alternate Truck Route
30	Eston Regional Park located at the southwest corner of Section 20, Township 23, Range 20, West 3rd Meridian	The jct. of municipal Hwy located at the north-east corner of Section 34, Township 28, Range 20, West 3rd Meridian
31	Jct. Hwy 4	Herschel Access Road
31	Grid 656 at NW corner of Section 34, Township 31, Range 17, west of the 3rd Meridian	The intersection of the Plenty grid at the NW corner, Section 21, Township 32, Range 19, west of the 3rd Meridian
39 Bienfait Access	Jct Hwy 39	Jct Hwy 18 (In the Town of Bienfait)
40 David Laird Campsite Road	Jct No. Hwy 40	Jct Hwy No. 16
41 Alvena Access	Jct Hwy 41	2nd Avenue in Village of Alvena
42	Jct Hwy 42 - Keeler Service Road/Railway Ave. S.	Keeler Service Road/Railway Ave. to RM Road 643
42	Jct Hwy 373	Jct Hwy 45 in the Town of Lucky Lake
42	From its Jct with Hwy 44 (km 43.68)	its Jct with Hwy 15 (km 59.92), for a total of 16.2 km.
44	Jct Hwy 19	Junction with the Danielson Provincial Park Access located in the southeast of Section 32, Township 26, Range 6, West of the 3rd Meridian.

44	Jct Hwy 21	Westerly to the Jct with the municipal road located in the NE 1/4 of Section 24, Township 26, Range 27, west of the 3rd Meridian
44	Jct with the municipal road located at the SW 1/4 of Section 26, Township 26, Range 27, west of the 3rd Meridian	Jct with the municipal road located east of Section 31, Township 26, Range 27, west of the 3rd Meridian
306	Riceton	Jct Hwy 6
308	Jct Hwy 8	Jct with Primary Grid 600
310	Jct of Grid 743	Jct of Hwy No. 16
312 Laird Access	Jct Hwy 312	The Village of Laird
332	7.1 km west of Jct Hwy 32	The Village of Hazlet except for that portion between the east and west Jct of Hwy 37
334	Jct Hwy 13	3.3 km south of Jct Hwy 339
342	Jct Hwy 4	Jct of Primary Grid 647 north of Lacadena
371	Jct Hwy 21	Alberta Border

The following highways are restricted by Minister's ORDER to a maximum gross vehicle weight of 8 000 kilograms from March 1<sup>st</sup> to November 30<sup>th</sup> each year.

Hwy	From	To
302	Cecil Ferry Road at the SE corner of Section 22, Township 48, Range 24, west of the 2nd Meridian	Jct of the municipal road located at SE corner of Section 5, Township 49, Range 22, west of Second Meridian (located by the Weldon Ferry)

The following access road is restricted by Minister's ORDER to a maximum gross vehicle weight of 8 000 kilograms from March 1<sup>st</sup> to November 30<sup>th</sup> each year.

Hwy	From	To
2 Paddockwood Access	Jct Hwy 2	Grid Road intersection NE Section 23, Township 52, Range 25, W2nd Meridian

The following highway is restricted by Minister's ORDER to a maximum gross vehicle weight of 8 000 kilograms from March 15<sup>th</sup> to November 15<sup>th</sup> each year and when the ambient temperature is above -6°C.

Hwy	From	To
8	0.5 km North of Junction Highway 49 at Norquay	The community of Swan Plain at the south boundary of SE 27-36-1-W2M

The following Access Road is restricted by Minister's ORDER to a maximum gross vehicle weight of 8 000 kilograms from February 24 to November 15<sup>th</sup> each year and when the ambient temperature is above -6°C.

Hwy	From	To
35 Aylsham Access	Hwy 35 (NW corner of section 32, township 48, range 14, west of second Meridian)	Aylsham (NE corner of section 34, township 48, range 13, west of second Meridian)

The following highway is restricted by Minister's ORDER to a maximum gross vehicle weight of 75% of primary highway weights, except during winter weight season, when winter secondary weights shall apply.

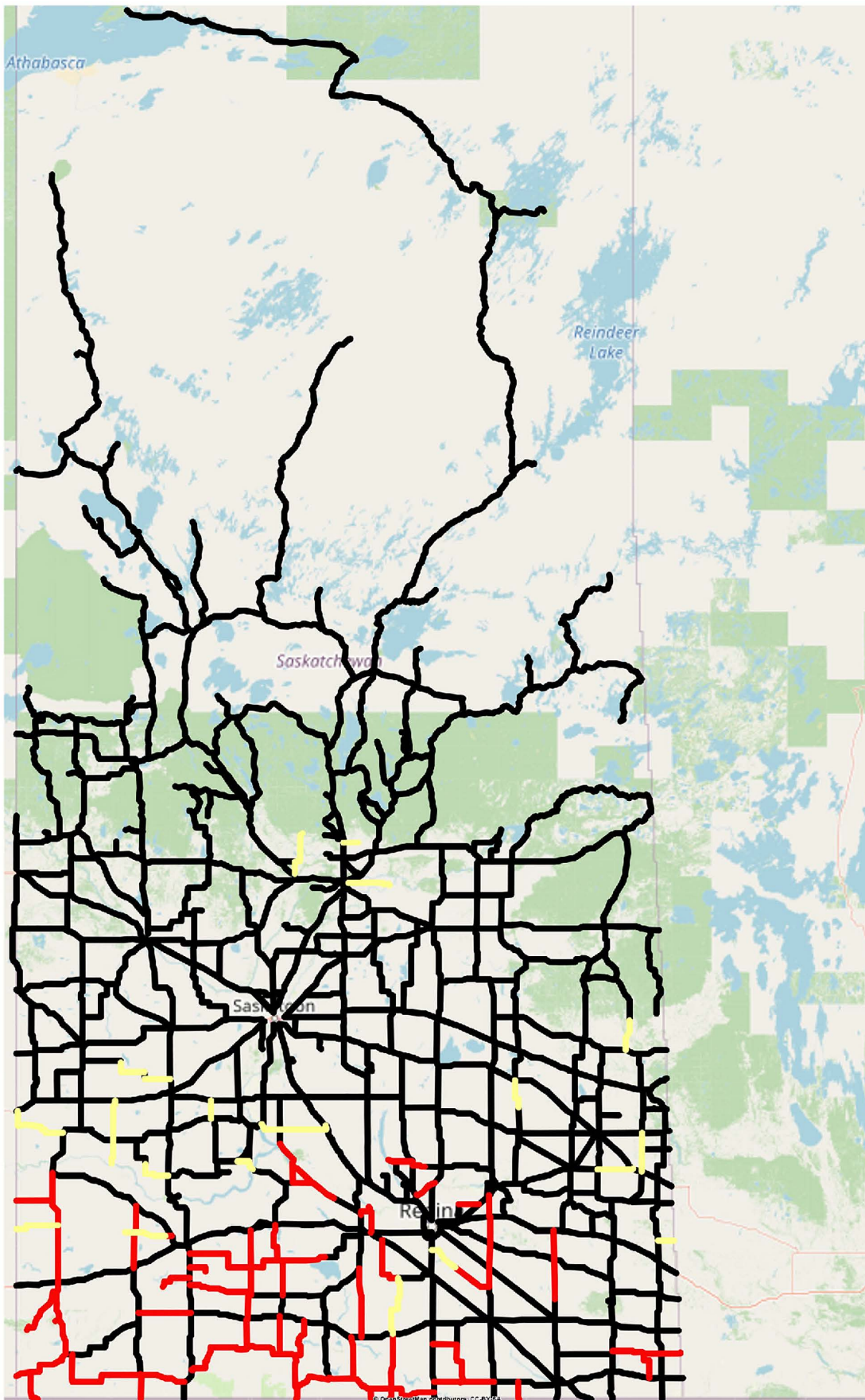
Hwy	From	To
240	Junction Highway 55	No. 240 - From Jct Hwy 55 to Prince Albert National Park SPECIAL RESTRICTIONS – 4.5 kg per mm (252 lbs/in) width of tire (manufacturer's stamped dimension) on any wheel to a maximum GVW of 22,686 kg (50,000 lbs), including the steering axle.

For detailed information on Rural Roads, call the local rural municipality or for Provincial Highway information email the Highway Hotline [hotline@gov.sk.ca](mailto:hotline@gov.sk.ca). The rural municipality administers and maintains the alternate haul routes. They are also responsible for issuing any overweight permits associated with the alternate haul routes.

Saskatchewan Ministry of Highways and Infrastructure provides seasonal highway restriction information on the Internet at: <http://www.saskatchewan.ca/truckingweights> under Special Weights.

Truckers can also contact the Saskatchewan Ministry of Highways, Trucking inquiry line at Toll free in Saskatchewan: 1-866-933-5290 Out of Saskatchewan: 306-933-5290 email: [mhitrucking@gov.sk.ca](mailto:mhitrucking@gov.sk.ca)

# Saskatchewan! Spring Road Restriction 2026 - Order 2



Notes